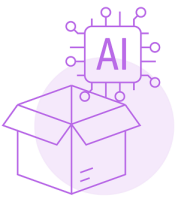


# AI Innovation Package

The **AI Innovation Package** is to support European startups and SMEs in the development of trustworthy Artificial Intelligence (AI) that respects EU values and rules.

The **AI Innovation Package** puts forward a broad range of measures to support AI startups and innovation, including a proposal to provide privileged access to supercomputers to AI startups and the broader innovation community, and a decision to establish the AI Office.

## AI Innovation Package



- GenAI4EU
- AI Office
- AI Start-up and Innovation Communication
- AI Factories
- ALT-EDIC
- CitiVERSE EDIC

## AI Start up and Innovation Communication outlines key activities

- **Financial support** through Horizon Europe and the Digital Europe programme dedicated to generative AI. Public and private investment of around €4 billion until 2027;
- Strengthen EU's generative AI talent pool;
- Further encourage public and private investments in AI start-ups and scale-ups, including through **venture capital** or **equity support**;
- The acceleration of the **development and deployment** of Common European Data Spaces.

## AI Office

The European AI Office will support the development and use of trustworthy AI, while protecting against AI risks. The AI Office was established within the European Commission as the centre of AI expertise and forms the foundation for a single European AI governance system.

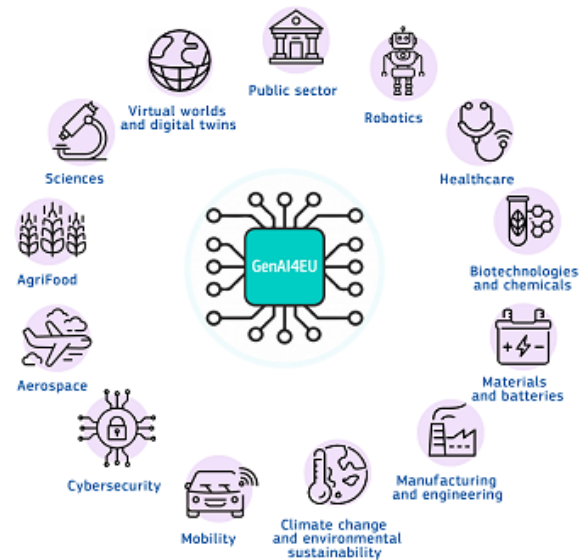
## AI Factories

Leveraging the supercomputing capacity of the EuroHPC Joint Undertaking to develop trustworthy cutting-edge generative AI models.



## GenAI4EU

Contributing to the development of novel use cases and emerging applications in Europe's 14 industrial ecosystems, as well as the public sector. Application areas include robotics, health, biotech, manufacturing, mobility, climate and virtual worlds.



## Supporting Member States in the creation of:

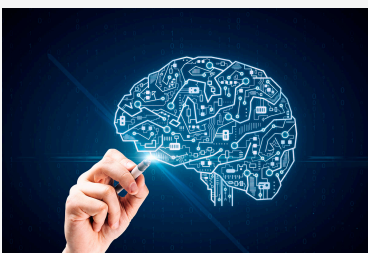
### ALT EDIC

The Alliance for Language Technologies' (ALT-EDIC) aims to develop a common European infrastructure in language technologies to address the shortage of European languages data for the training of AI solutions, as well as to uphold Europe's linguistic diversity and cultural richness. This will support the development of European large language models.

### 'CitiVERSE' EDIC

The CitiVERSE EDIC will apply state-of-the-art AI-tools to develop and enhance Local Digital Twins for Smart Communities, helping cities simulate and optimise processes, from traffic management to waste management.

## Related Content



### [European approach to artificial intelligence](https://digital-strategy.ec.europa.eu/en/policies/european-approach-artificial-intelligence) (<https://digital-strategy.ec.europa.eu/en/policies/european-approach-artificial-intelligence>)

The EU's approach to artificial intelligence promotes excellence and trust, by boosting research and industrial capacity while ensuring safety and fundamental rights.

PDF generated on 30/11/2025 from [AI Innovation Package](https://digital-strategy.ec.europa.eu/en/factpages/ai-innovation-package) (<https://digital-strategy.ec.europa.eu/en/factpages/ai-innovation-package>)

© European Union, 2025 - Reuse of this document is allowed, provided appropriate credit is given and any changes are indicated (Creative Commons Attribution 4.0 International license). For any use or reproduction of elements that are not owned by the EU, permission may need to be sought directly from the respective right holders.